

EPISODE
402

HOW MUCH DO JAPANESE BOND YIELDS MATTER?

Nucleus
wealth

Disclaimer:

The information provided on this presentation is general in nature and does not constitute personal financial advice. The information has been prepared without taking into account your personal objectives, financial situation or needs. Because of this, you should consider the appropriateness of the information for your own objectives, financial situation and needs before acting on it.

Also, before you decide to invest in a financial product arranged by a representative of Nucleus Wealth Management Pty Ltd, ABN 54 614 386 266, corporate authorised representative of Nucleus Advice Pty Ltd AFSL 515796 (Nucleus Wealth or we or us), it is important that you read and consider the Product Disclosure Statement relating to the product before making any decision about whether to invest in it.

Japanese Bonds – A “Truss Moment” or a Storm in a Teacup?:

The Headline Risk

- Recent Volatility: JGB yields have spiked
- The “Truss” Fear
- Hedge Fund Exposure



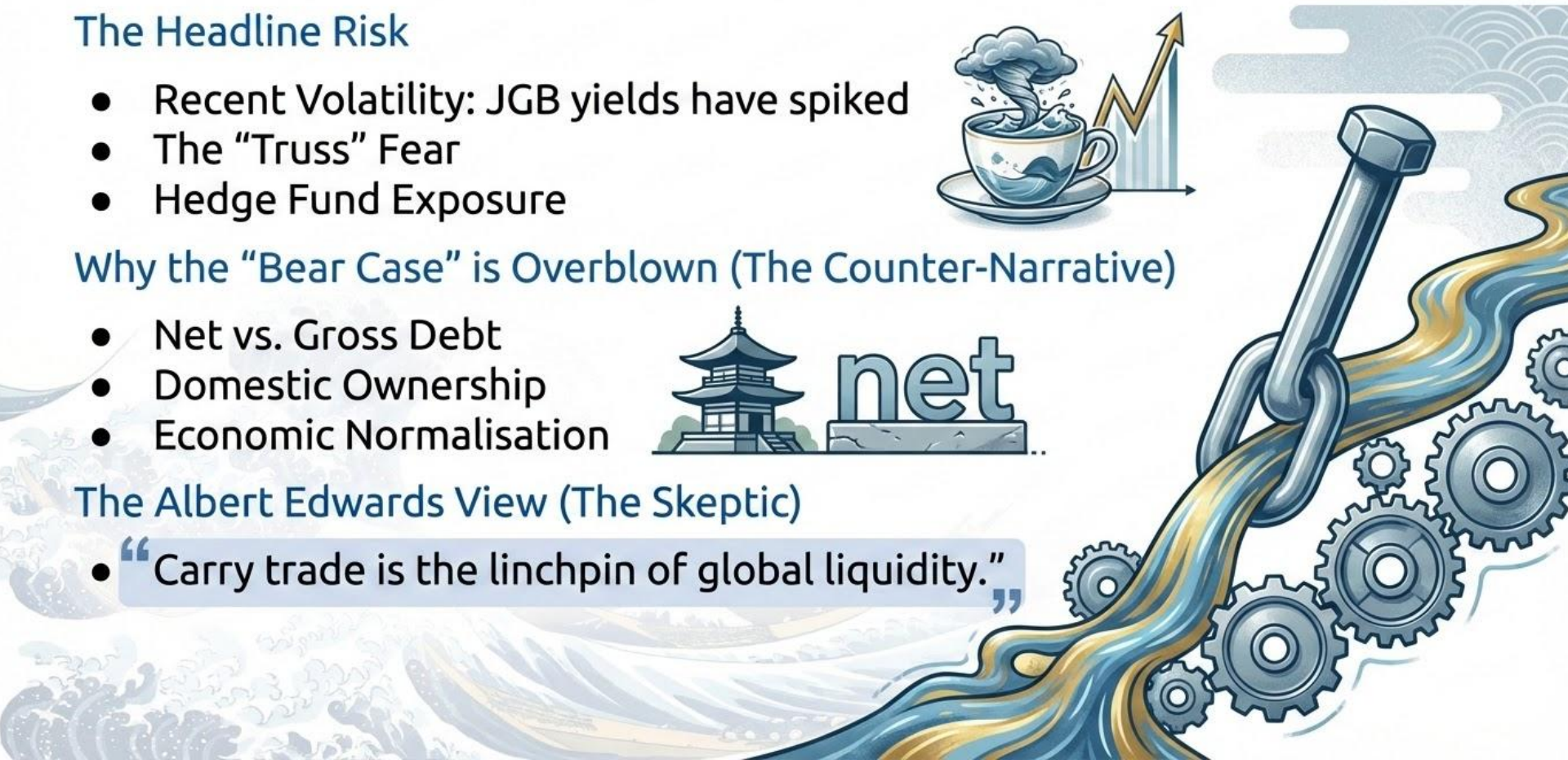
Why the “Bear Case” is Overblown (The Counter-Narrative)

- Net vs. Gross Debt
- Domestic Ownership
- Economic Normalisation

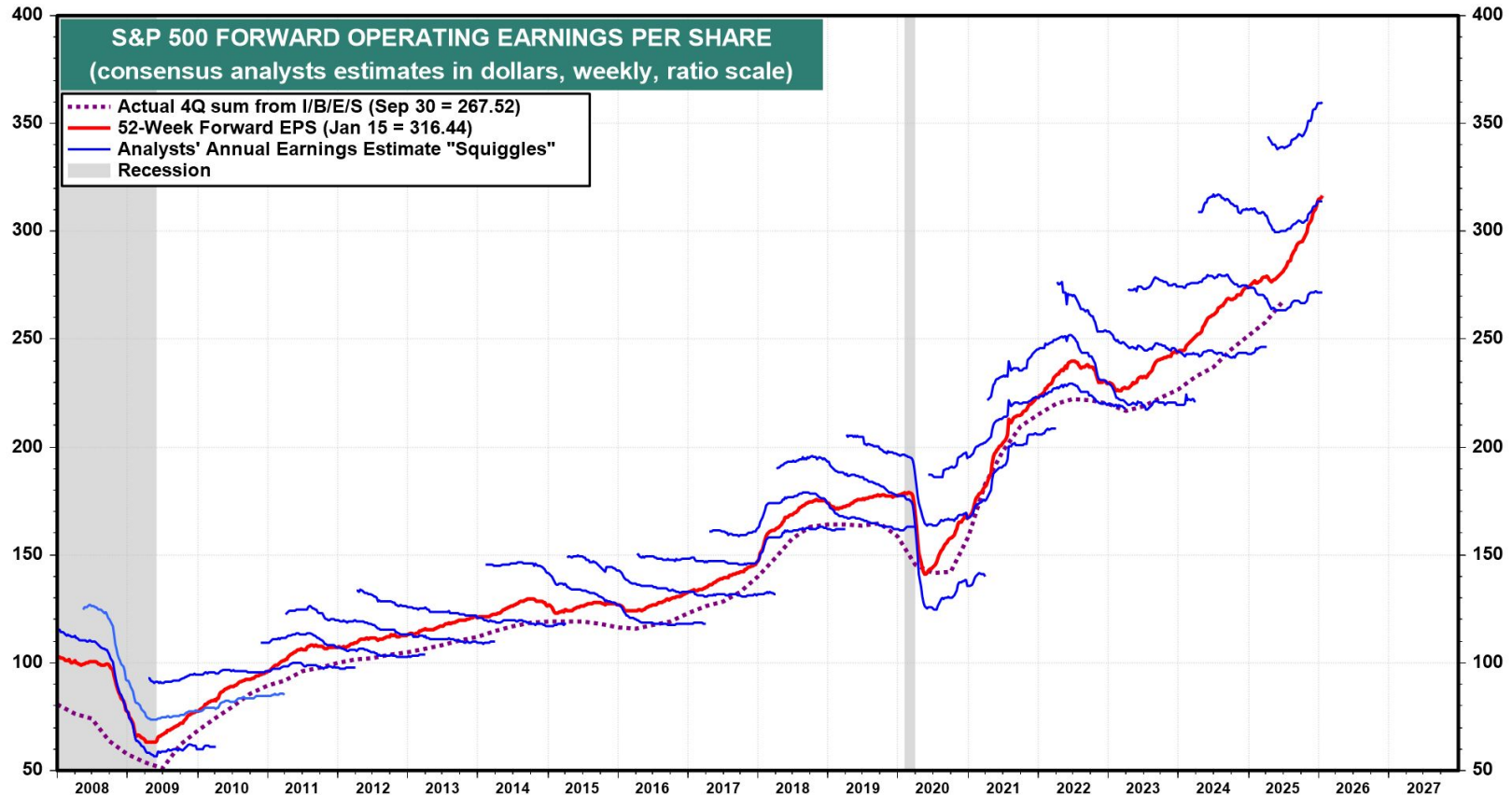


The Albert Edwards View (The Skeptic)

- “Carry trade is the linchpin of global liquidity.”

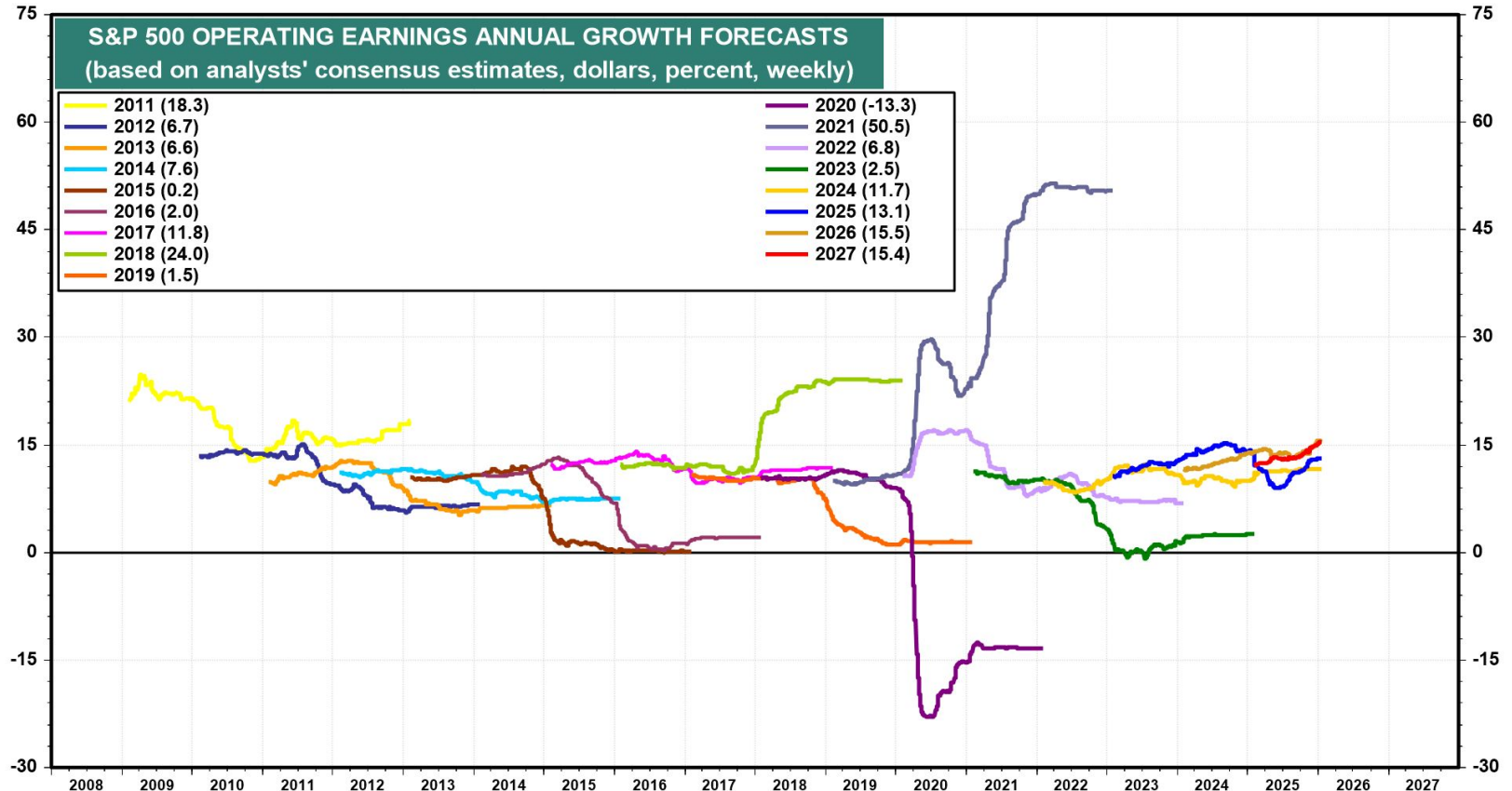


Earnings



Source: LSEG Datastream and © Yardeni Research.

Earnings



Source: LSEG Datastream and © Yardeni Research.

The "Key Man" Risk – Is Trump Fit to Lead?

- The "Senility" Narrative
- Policy Volatility
- Greenland
- TACO trade problems



More from Nucleus Wealth



Find out what your personalised investment could look like in 10-20 minutes – commitment free & at no cost.

Find us on all major podcast platforms:



Nucleus Wealth on social media:



Facebook.com/nucleuswealth



Linkedin.com/company/nucleuswealth



Instagram.com/nucleus_wealth



Twitter.com/nucleuswealth

Read insightful blog articles:

nucleuswealth.com/blog

*Have a guest or topic suggestion for the show?
Leave a comment down below.*